

Hidromac's Series T and U line of self-priming pumps are the resulting combination of innovation and 20 years of serving the submersible sewage market. These pumps were designed for economical, trouble free operation of solid handling liquids.

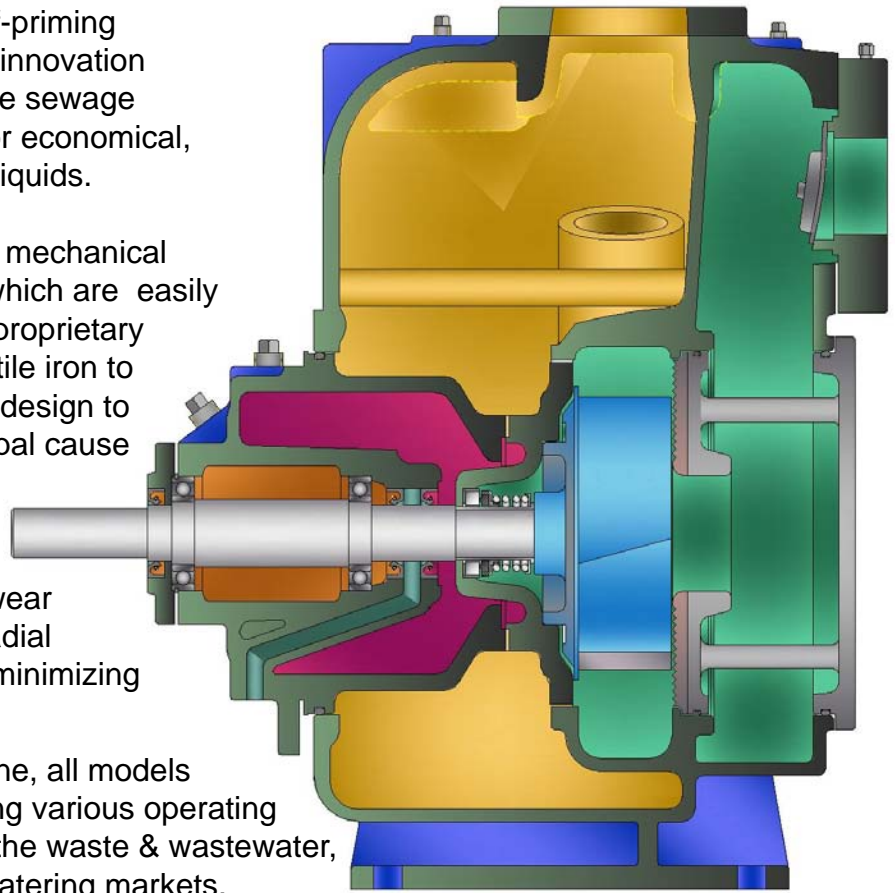
Our design incorporates our standard mechanical seal design with silicon carbide faces, which are easily replaceable at a fraction of the cost of proprietary designs. Our wear plate is made of ductile iron to improve wear and has a spiral grooved design to tear fibrous material, which is the principal cause of clogging in sewage pumps.

Our impeller has an interrupted rear wear ring, designed to better handle shock radial loads typical of sewage pumping, thus minimizing shaft deflections.

Available in sizes 3" to 6" in T and U line, all models operate over a range of speeds achieving various operating requirements or specific duty points for the waste & wastewater, pulp & paper, steel, and contractor dewatering markets. Available in direct coupled or piggyback configurations, for electric, gasoline or diesel drivers.

Hidromac's in-house foundry produces the highest quality of precision castings for optimal performance.

Our trash pumps are available in a variety of metallurgies to meet your specific application.



3x3 T SERIES

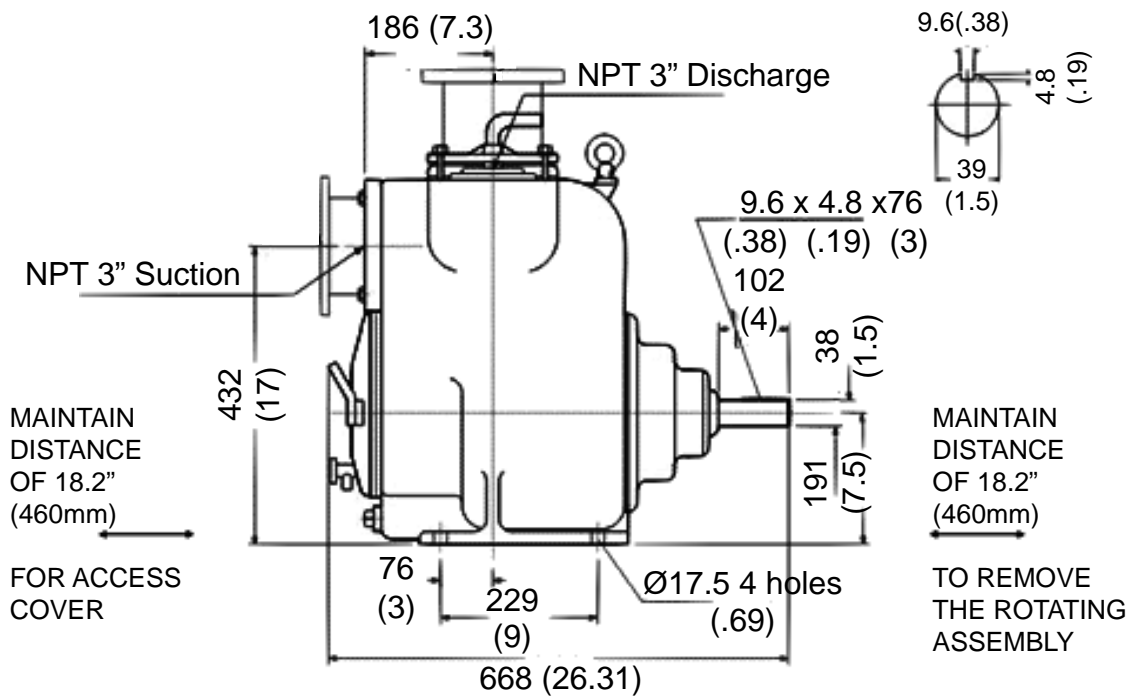
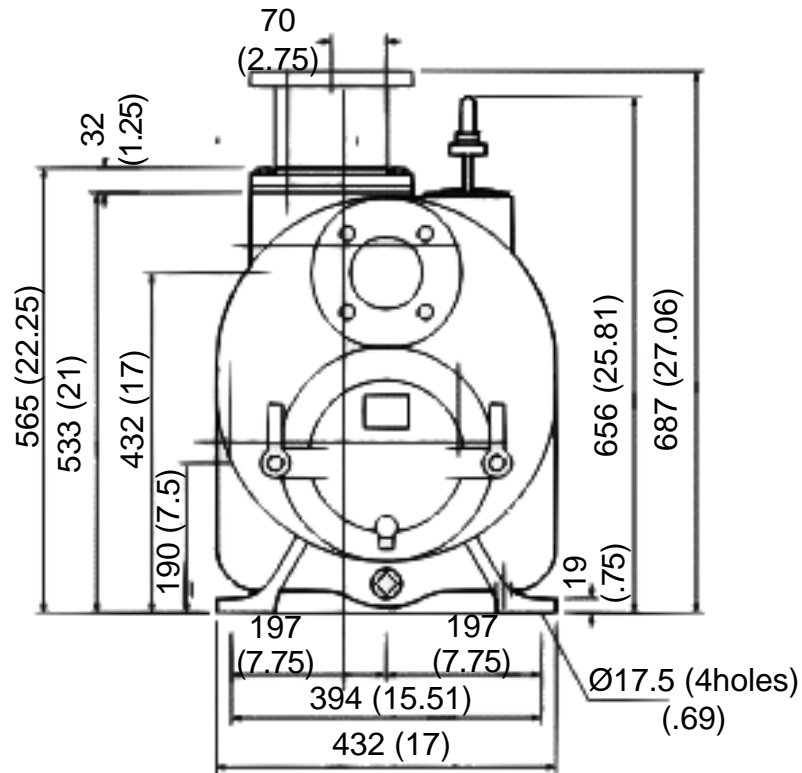
In order to verify that each pump meets our exacting criteria, every pump is tested according to the National Hydraulic Institute and our manufacturing is ISO 9001-2000 certified, guaranteeing quality and reliability in all our products.

Feature-Benefit

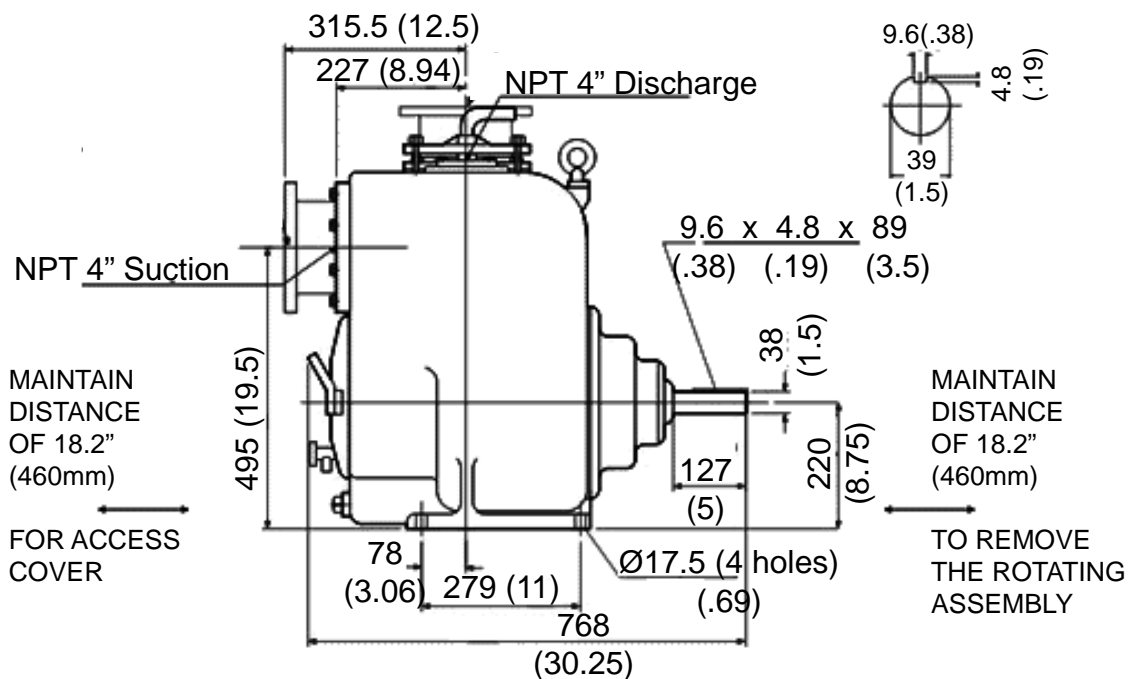
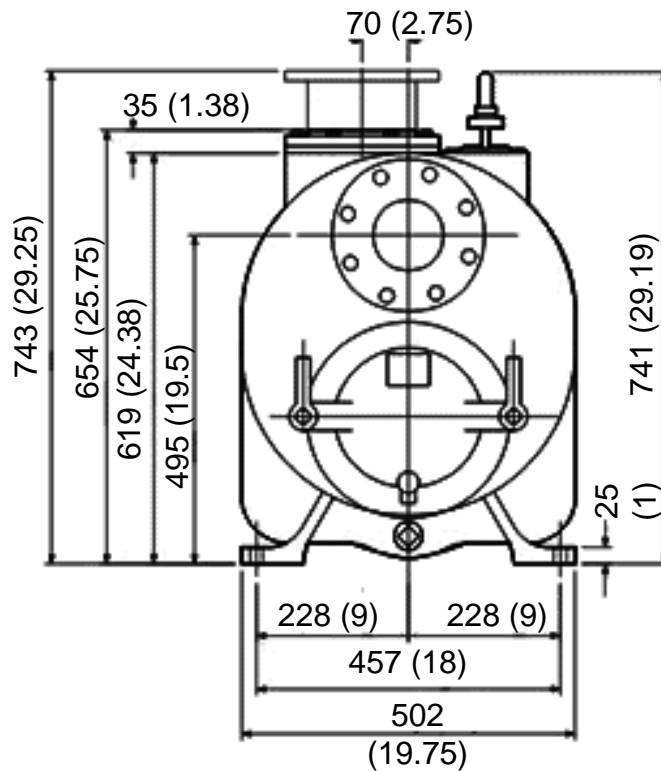
HIGH & DRY – Only suction pipe is in the liquid
ACCESS – Pump is at floor level for ease of installation and maintenance
WEARING PARTS – Only 3 parts, seal, impeller and wear plate.
FOOT VALVES – Not required.
AIR HANDLING – Can reprime after suction breaks. Can handle entrained gasses.
DRIVER- Uses standard off the shelf motors. Can be direct coupled or v-belt drive.

IMPELLER – Solid handling abilities of up to 3" spheres.
INSPECTION COVER – Easy to unclog pump, no special tools required.
MAINTENANCE – Simple replacement of all wearing items or complete rotating assembly.
SUCTION CHECK VALVE – Reduces the priming cycle.

3x3 T SERIES

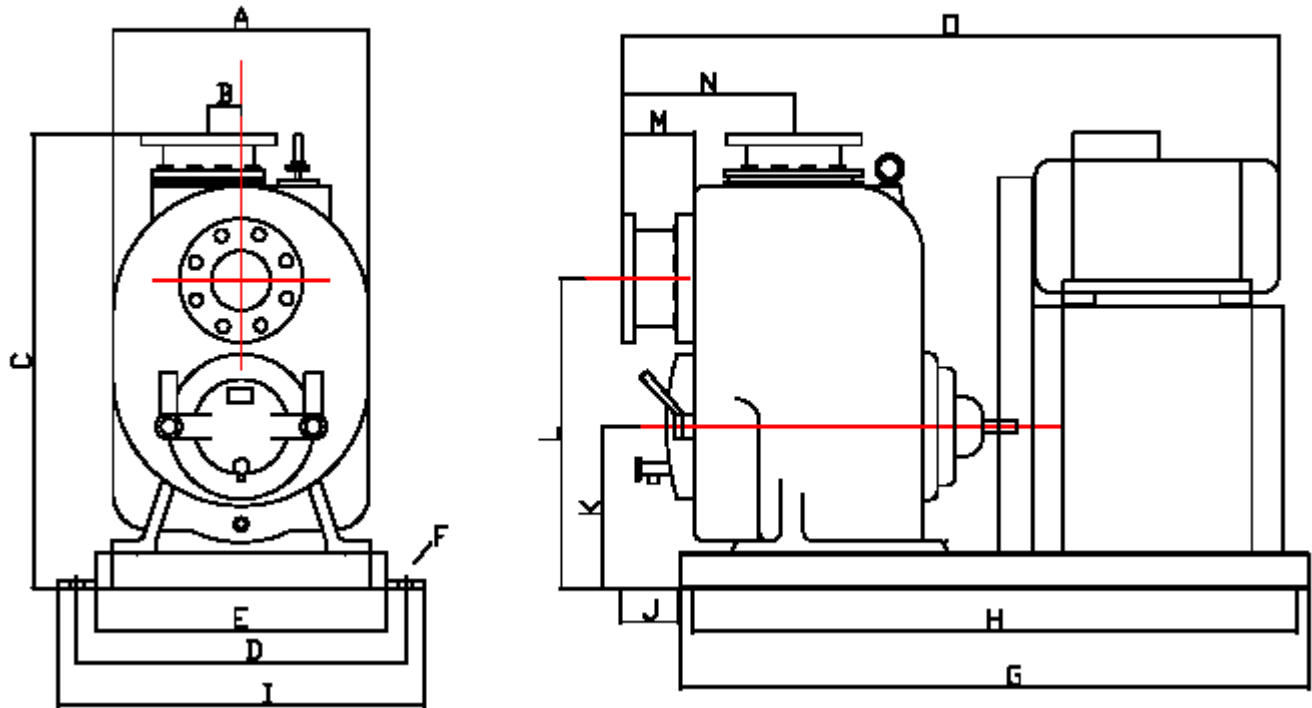


4x4 T SERIES



PIGGYBACK MOUNTED MODELS

T SERIES

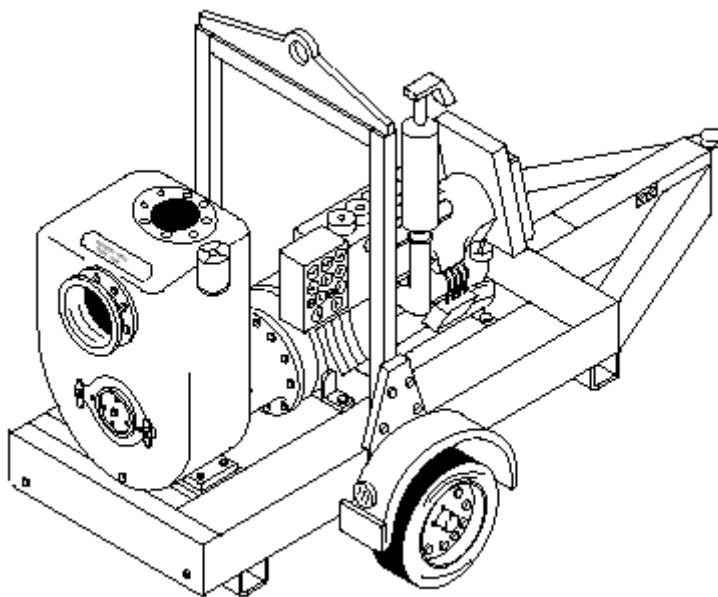
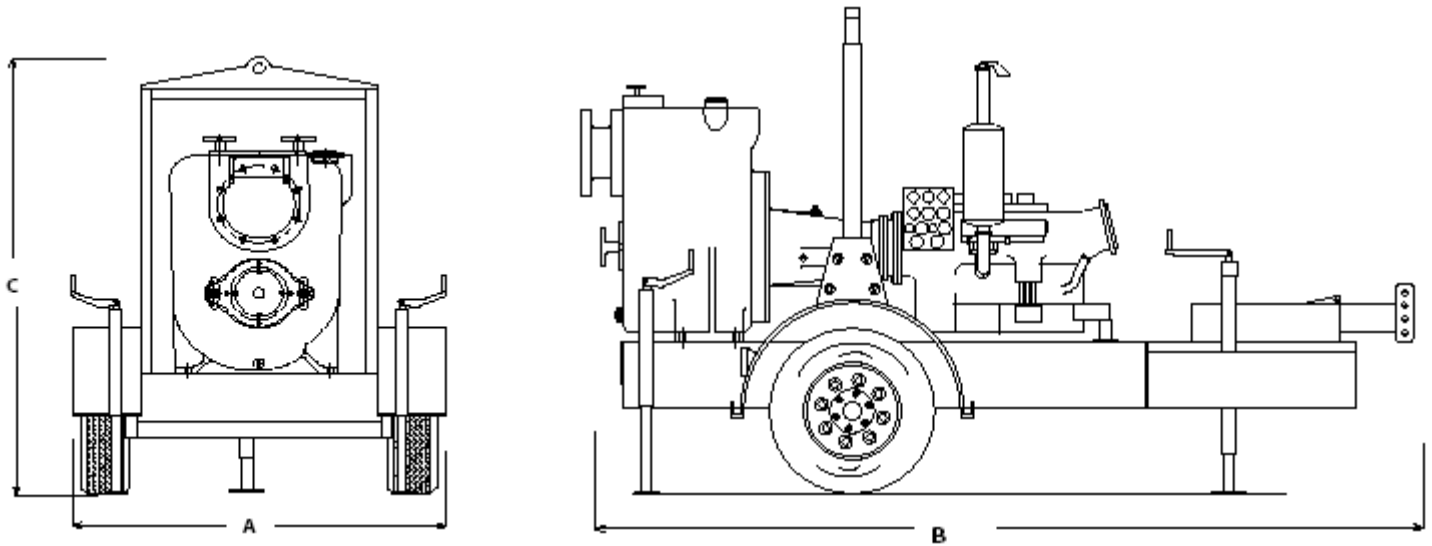


MODEL.	SUCT.	DISC	A	B	C	D	E	F	G	H	I	J	K	L	M	N	O
3x3x9	76	76	432	70	785	520	440	18	1000	920	600	100	290	532	107	292	1074
4x4x10	102	102	502	70	845	650	560	18	1300	1200	745	75	320	595	88	315	1280
3x3x11	76	76	431	70	786	520	440	18	1000	920	600	100	290	532	105	290	1074
4x4x11	102	102	508	70	854	650	560	18	1300	1200	745	75	322	608	80	313	1260

* Dimensions in mm.

Dimension may vary depending on motor manufacturer.
These dimensions not to be use construction.

TRAILER MOUNTED MODELS



MODEL	DIMENSIONS [mm.]		
	A	B	C
TFC-3x3 U/T	1016	1905	1422
TFC-4x4 U/T	1016	1905	1422
TFC-6x6 U/T	1016	2159	1422

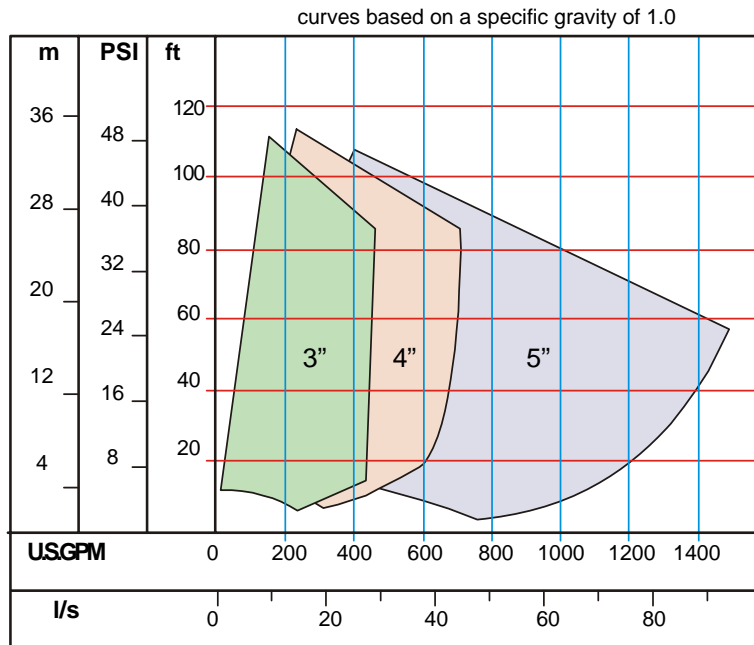
These dimensions are for information purposes only and are not to be used for construction purposes.

The dimensions will vary depending on motor and manufacturer.

MATERIAL SELECTION

	Standard	Type A	Type B	Type C
Casing	A48-CL30			
Impeller	A60-40-18	A 216	CD4MCU	SS 316
Wear plate	A60-40-18	A 216	CD4MCU	SS 316
Cover plate	A48-CL30	A 216	CD4MCU	SS 316
Bearing housing	A48-CL30			
Seal plate	A48-CL30	A 216	CD4MCU	SS 316
Flap valve	Viton			
Sleeve shaft	ANSI 4140	SS316		
Flange	A48-CL30			
O-ring	Buna	Buna	Viton	
Impeller Shaft	ANSI 4140	ANSI 17-4		
Mechanical seal	Faces in silicon carbide, elastomer in buna			
Specification	A60-40-18 (Ductile Iron) ASTM 216 (Hard Iron)			
	A48-CL30 (Cast Iron) SS316 (A743 CF8M)			

PERFORMANCE CURVES



Note: Consult factory for other performance conditions.

Hidromac Ltda.
 Calle 79 No 73-528
 Barranquilla - Colombia
 Email: hidromac@telesat.com.co
 Tlf: (575) 353-6631 - 6633
 Fax: (575) 353-6649

Malmmedi C.A.
 Zona Industrial El Tomoso
 Santa Teresa del Tuy - Venezuela
 Email: bombasmalmmedi@cantv.net
 Tlf: (58) 2395145026 - 2395145045
 Fax: (58) 2129613369

TRT. TRASH - 14/10
 Diseño Grafico: Rita Texeira